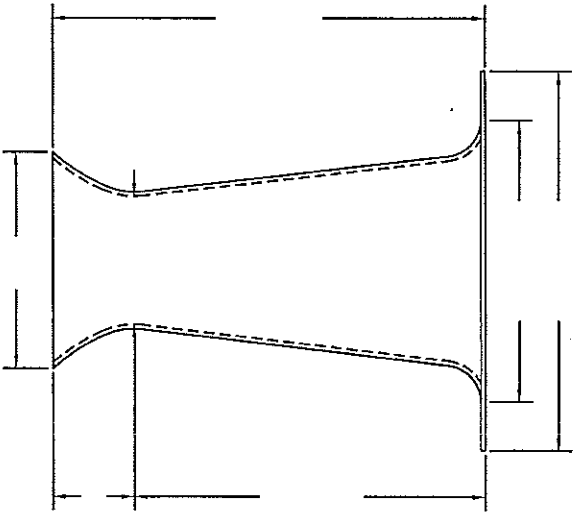
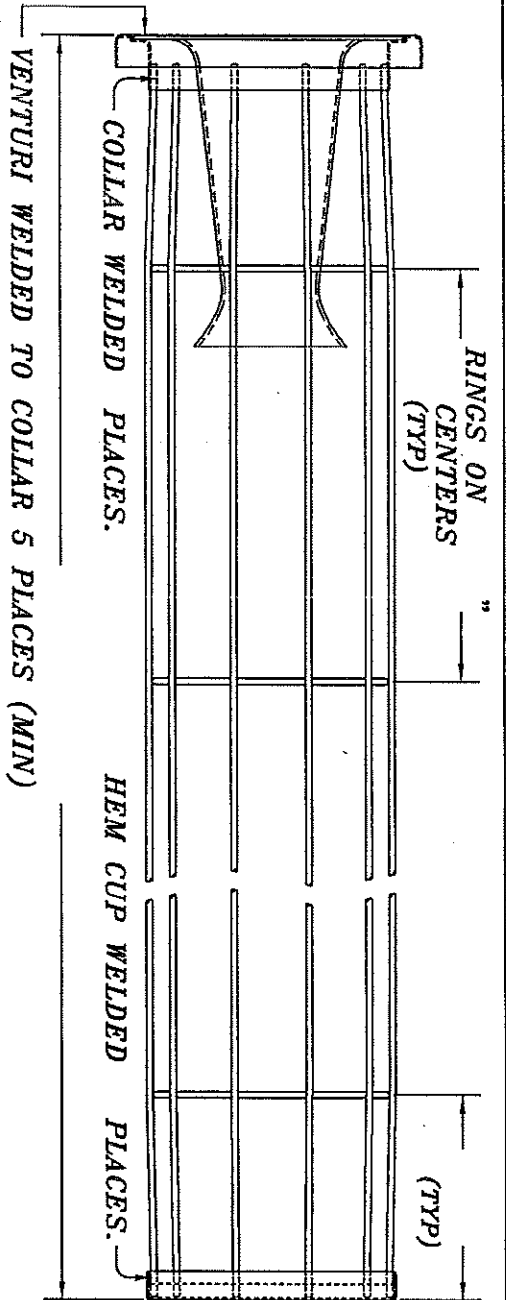
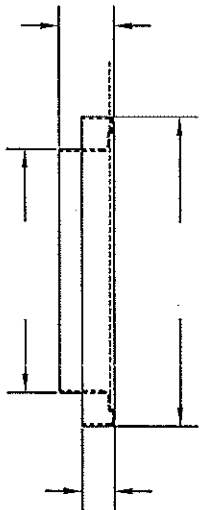


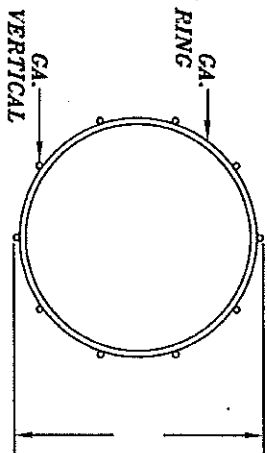
CAGE TOP VIEW



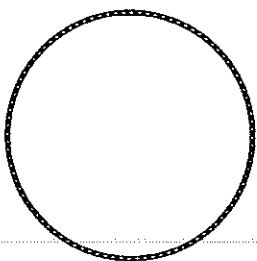
VENTURI DETAILS



RECESSED COLLAR DETAIL



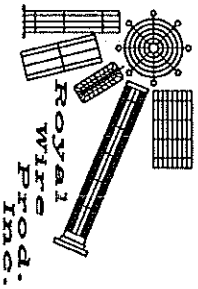
CAGE DETAIL  
VERTICAL  
MAT. 11 GA.



HEM CUP DETAIL

<b>ALL CAGE TOLERANCES</b>	
UNLESS OTHERWISE SPECIFIED	
DIAMETERS	+0.000", -0.0625"
LENGTHS	+0.000", -0.250"
COLLAR TO FIRST RING	5.000"
LAST RING TO CUP	4.500"

- MATERIAL OPTIONS**
- BASIC STEEL
  - GALVANIZED STEEL
  - 304 S.S.
  - OTHER \_\_\_\_\_



SCALE	NTS	T/A SAMPLE W/VENT	DWG. BY	RAS
DATE			REV.	001
REP'D/SAM	DATE	DWG. BY	PART. NO.	REVISTIONS.