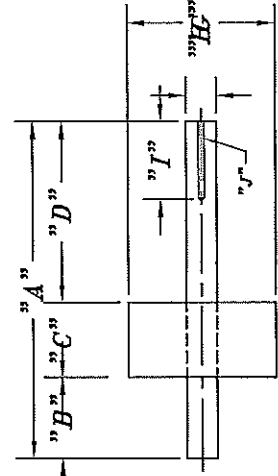
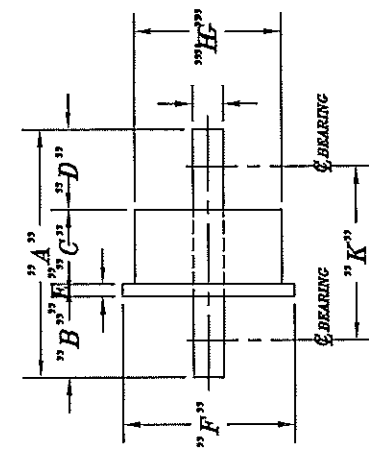


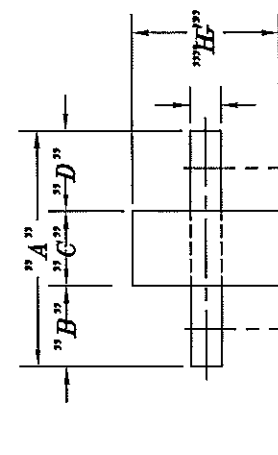
DOUBLE FLANGED TRUNNION



FLAT FACED TRUNNION
(FOR SHAFT MOUNT REDUCER)



SINGLE FLANGED TRUNNION



FLAT FACED TRUNNION

- "A" = _____ SHAFT LENGTH
- "B" = _____ SHAFT PROJECTION
- "C" = _____ TRUNNION WEAR FACE
- "D" = _____ SHAFT PROJECTION
- "E" = _____ FLANGE WIDTH
- "F" = _____ FLANGE O.D.
- "G" = _____ TRUNNION O.D.
- "H" = _____ SHAFT DIAMETER
- "I" = _____ KEYWAY LENGTH
- "J" = _____ KEYWAY SIZE
- "K" = _____ BEARING CENTERS

IS SHAFT THREADED? YES _____ NO _____
 PART NUMBER OF BEARINGS = _____
 QUANTITY REQUIRED = _____
 **NOTE: OUTSIDE CONCENTRIC TO ±.010"

Reliable Asphalt Products

P.O. Box 519 Shelbyville KY 40066
 Phone: (502) 647-1782 Fax: (502) 647-1786

SCALE NONE APPROVED BY: _____ DRAWN BY: **Todd**
 JOB: _____ DATE: 11/22/05

DRYER TRUNNIONS
CUSTOMER FILL IN
RAP STANDARD DRAWING NUMBER

REV	BY	DATE	DESCRIPTION
			TOLERANCES UNLESS OTHERWISE NOTED
			WHOLE NUMBER DIM. 1/16"
			FRACTIONAL DIM. 1/32"
			ANGULAR DIM. 1/16"
			DECIMAL DIM. .000
			CHAMFER DIM. .005

THE INFORMATION CONTAINED HEREIN IS PROPRIETARY TO RELIABLE ASPHALT PRODUCTS AND SHALL NOT BE REPRODUCED OR DISCLOSED IN WHOLE OR IN PART, NOR USED FOR ANY DESIGN OR MANUFACTURING PURPOSE UNLESS AUTHORIZED IN WRITING BY RELIABLE ASPHALT PRODUCTS.